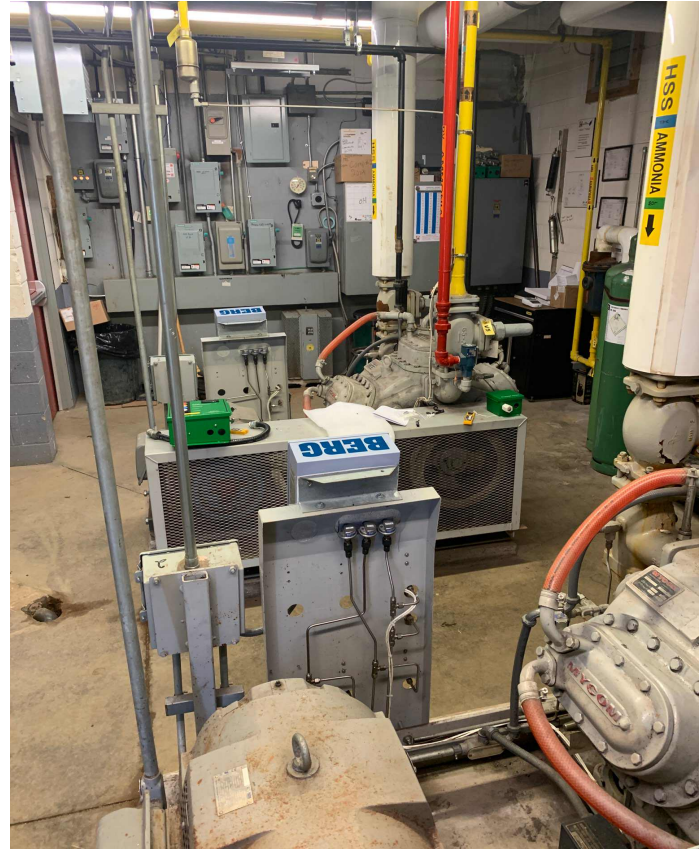


Project:
Ammonia Ice Rink Refrigeration
System

Client: Township of Essa -
Thornton Community Centre
Year: 2020

Solution: Ammonia Refrigeration
System Replacement for a
Municipal Ice Rink



Features:

- Replacement of aging ice rink chiller with an ammonia plate and frame chiller:
- Cutout and removal of existing chiller vessel
- Installation and placement of new low charge chiller package with new insulation for surge vessel
- Level eyes in drop leg for visual indication of liquid level
- Extended liquid leg with isolation and deadman valve or oil drainage
- Pump-out and recovery of ammonia
- Electrical and mechanical installation
- Factory testing, start-up, commissioning & operator training

Highlights:

-  Custom Engineered
-  Ammonia
-  Factory Tested
-  Start-up

Removal and replacement of existing shell and tube chiller with an ammonia plate and frame chiller at a community centre's recreational ice rink. Scope of service included cutout and removal of existing chiller vessel, installation & placement of new low charge chiller package with new insulation for surge vessel, level eyes in drop leg for visual indication of liquid level, extended liquid leg with isolation and deadman valve or oil drainage, pump-out and recovery of ammonia, electrical and mechanical installation, factory testing, start-up, commissioning and operator training.

Call or visit: 1 866-918-6648
www.berg-group.com/rinks